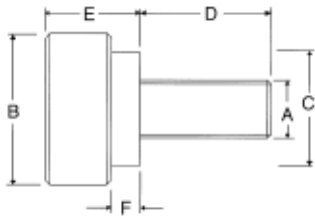


Precision Thumb Screws with shoulder



- Precision thumb screw for a wide variety of applications
- 303 stainless steel or carbon steel with black oxide finish
- Diamond knurl
- Shoulder provides an excellent bearing surface
- Inch and metric sizes available

		INCH					
Steel PART #	Stainless Steel PART #	Thread A	D	B	C	E	F
3101	4101	#4-40	1/4	3/8	1/4	3/16	3/32
3102	4102	#4-40	3/8	3/8	1/4	3/16	3/32
3251	4251	#4-40	7/16	3/8	1/4	3/16	3/32
-	4075	#4-40	1/2	3/8	1/4	3/16	3/32
3252	4252	#6-32	3/8	7/16	3/8	5/16	3/32
3202	4202	#6-32	7/16	7/16	3/8	5/16	3/32
3253	4253	#6-32	1/2	7/16	3/8	5/16	3/32
3204	4204	#6-32	9/16	7/16	3/8	5/16	3/32
3205	4205	#8-32	5/16	7/16	3/8	5/16	3/32
3206	4206	#8-32	3/8	7/16	3/8	5/16	3/32
3207	4207	#8-32	7/16	7/16	3/8	5/16	3/32
3208	4208	#8-32	1/2	7/16	3/8	5/16	3/32
3209	4209	#8-32	9/16	7/16	3/8	5/16	3/32
3301	4301	#8-32	5/16	1/2	3/8	5/16	3/32
3302	4302	#8-32	3/8	1/2	3/8	5/16	3/32
3303	4303	#8-32	7/16	1/2	3/8	5/16	3/32
3304	4304	#8-32	1/2	1/2	3/8	5/16	3/32
3305	4305	#8-32	5/8	1/2	3/8	5/16	3/32
3401	4401	#10-32	5/16	1/2	3/8	5/16	3/32
3402	4402	#10-32	3/8	1/2	3/8	5/16	3/32
3403	4403	#10-32	7/16	1/2	3/8	5/16	3/32
3404	4404	#10-32	1/2	1/2	3/8	5/16	3/32
3405	4405	#10-32	9/16	1/2	3/8	5/16	3/32
3406	4406	#10-32	5/8	1/2	3/8	5/16	3/32
3076	4076	#10-32	3/4	1/2	3/8	5/16	3/32
3407	4407	1/4-20	1/2	1/2	3/8	3/8	1/8
3408	4408	1/4-20	5/8	1/2	3/8	3/8	1/8
3409	4409	1/4-20	3/4	1/2	3/8	3/8	1/8
3412	-	1/4-20	1"	1/2	3/8	3/8	1/8

		METRIC					
Stainless Steel PART #	Thread A	D	B	C	E	F	
4601	M3 x .5	8mm	9.5mm	6.4mm	7.9mm	2.3mm	
4602	M3 x .5	11	9.5	6.4	7.9	2.3	
4603	M3 x .6	9	9.5	6.4	7.9	2.3	
4604	M3 x .6	13	9.5	6.4	7.9	2.3	
4605	M4 x .7	9	11.1	9.5	7.9	2.3	
4606	M4 x .7	13	11.1	9.5	7.9	2.3	
4607	M5 x .8	9	11.1	9.5	7.9	2.3	
4608	M5 x .8	16	11.1	9.5	7.9	2.3	
4609	M6 x 1.0	9	12.7	9.5	9.5	3.2	
4610	M6 x 1.0	13	12.7	9.5	9.5	3.2	
4611	M6 x 1.0	19	12.7	9.5	9.5	3.2	